

Service by Design



Vitra WorkIt Team Workstation and ID Chair. Designed by Arik Levy. Goodbye-Limits Photography

About WorkSpaces LLC



What is WorkSpaces LLC?

We are a team of collaborative workplace consultants providing strategic furniture solutions for the commercial environment. We offer design and space planning as well as product solutions for all areas of the office at price points to meet all budgets. Our mission is to deliver comprehensive workplace solutions through a diverse product offering that will meet your office's culture and design intent. We partner with A&D, construction, real estate brokerage and project management firms to provide world-class interiors for our clients. As a result, we are seen – and valued – as a resource to all of our partners. We think ahead of the curve, envisioning all spatial and functional parameters before the furniture is ever chosen.



Who are we?

We believe that through diversity comes innovation. At WorkSpaces, we hire a diverse mix of employees from varied backgrounds with a broad range of skill sets and talents to ensure that we are constantly pushing the envelope on each project. We believe that our strength lies in each of our team members, which is why we hand select each individual for their unique personal and professional qualities.

Quality control is a constant vigilance for us. Unlike our competitors, we define WorkSpaces as a consulting firm rather than a sales organization. We don't have customers, we have clients... and client satisfaction is what drives us. Our goal is not to meet your requirements, but to always exceed your greatest expectations.



HALCON Proximus Office Open-Wall Design

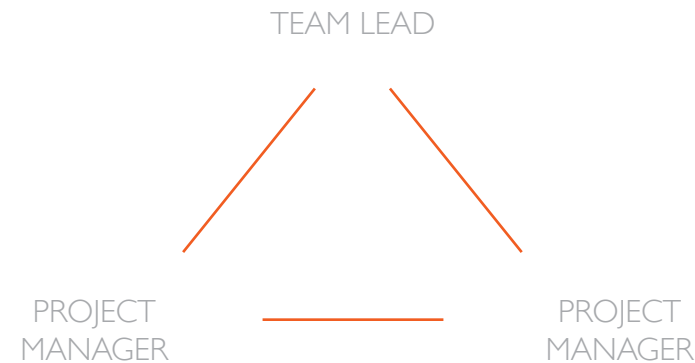
Who do we represent?

WorkSpaces is a premier Inscape, Kimball Office and Vitra dealer. In addition, we represent over 250 quality manufacturers who share our commitment to quality, customer satisfaction and service.

As an independent dealership free from the restrictions of larger manufacturers, we routinely partner with manufacturers who provide the most appropriate product solutions to meet the needs of our clients. For more information and a full list of our partners, please visit www.WorkSpacesLLC.com.

INSCAPE | **Kimball®Office** | **vitra.**

What makes us unique?



Our Model

- Team Leads and Project Managers are hired simultaneously, as a cohesive unit, with backgrounds and skill sets that include design, architecture and construction.
- Team Leads and Project Managers benefit as a unit from a comprehensive cross-training program.
- Project Managers always remain part of the same cohesive unit and do not float from team to team, promoting synergies in their team performance.
- All team members are valued as assets to the team and company. Their input and experiences are valued as part of a successful team process and thus, they are compensated as a team.

Your Benefit

The resulting benefit is a 90% employee retention rate, which translates to teams of knowledgeable and trained professionals who bring consistency and success for our clients and to their projects.

What do we believe?

Through our unique, team-centric culture we...

Invest in our People

We believe that human capital is our most important asset. We employ solution-focused consultants, not salespeople, who are dynamic and talented problem solvers.

Live by our Philosophy

We believe our team-centric approach to every project yields unparalleled customer satisfaction, which is of paramount importance to us. Our results-driven teams are invested in the success of each project, which guarantees our mantra of "Service by Design."

Respect our Environment

We believe we should live what we sell. We respect our manufacturers' passion to design and produce sustainable, environmentally-conscious products. We believe we should return the favor by living in, working in and providing well-designed, sustainable environments for our clients, as well as ourselves.

Believe in our Products

We believe our manufacturer relationships should be cultivated more as partners, rather than vendors and in return, they should share in and promote our belief in total customer satisfaction. Our trusted and proven partners are industry leaders with reputations built on exceptional product and design performance.

Build a Culture for Today and Tomorrow

We believe we should foster a culture of continuous process and self-improvement to ensure the professional relevance of each member of our team. Our democratic and transparent structure leaves no voice unheard, which allows a constant exchange of innovative ideas that push the envelope for our clients, our employees as individuals and for WorkSpaces as a whole.



Inscape Scala integrated with Planna

Who are our clients?

Our portfolio of clients is as diverse as our products. Our clients range from residential end users and commercial clients to multi-national government agencies and Fortune 500 companies.

Arnold World Wide

Satellite Office



Location: Arlington, Virginia
Year of Install: 2008
Team: BUJA
Design Firm: LSM
Manufacturers: Inscape | Dauphin | HumanScale

Arnold World Wide is one of the nation's largest advertising agencies – with locations across the globe. WorkSpaces worked closely with the DC-based design strategy firm, LSM, to create a bright, modern space that is as beautiful as it is functional. The Inscape Platform system was used with the award-winning Planna desking system. The floating worksurface detail, combined with the technology capability of the Platform System resulted in an installation that was harmonious with the environment.



Cambridge Associates

Arlington, VA Office



Location: Arlington, Virginia
Year of Install: 2010
Team: BUJA
Design Firm: Gensler
Manufacturers: Inscape | Kristalia | Bernhardt
HumanScale | Prismatic

Cambridge Associates is a leader of investment services from research and consulting to total portfolio oversight for clients who are among the world's most sophisticated investors. The space needed to reflect the firm's young and energetic workforce. Inscape Platform and Planna were used to create a unique benching application, making storage for financial records. This was a repeat purchase of Inscape for Cambridge, which is testament to the quality and longevity of the product.



Unite Here! – Local 25

DC Office



Location: Washington, DC
Year of Install: 2010
Team: Fink
Design Firm: VOA
Manufacturers: Inscape | Kristalia | Hightower

Unite Here! represents workers throughout the U.S. and Canada who work in the hospitality, gaming, food service, manufacturing, textile, laundry and airport industries. The goal of this project was to create a work environment that is both functional and beautiful. The simple, streamlined design of the workstations, lighting and seating create an exciting contrast against Unite Here's signature Fire Engine Red. Add to that the juxtaposition of warm wood against sleek metal and bright white accents, resulting in a unity of modern and organic design elements.



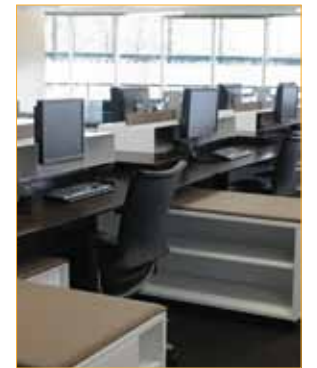
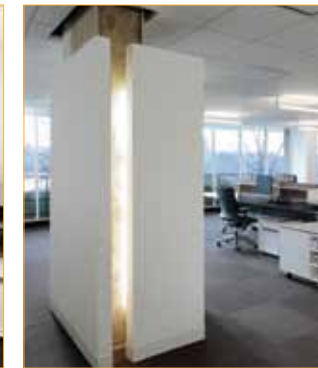
IA Interior Architects

DC Office



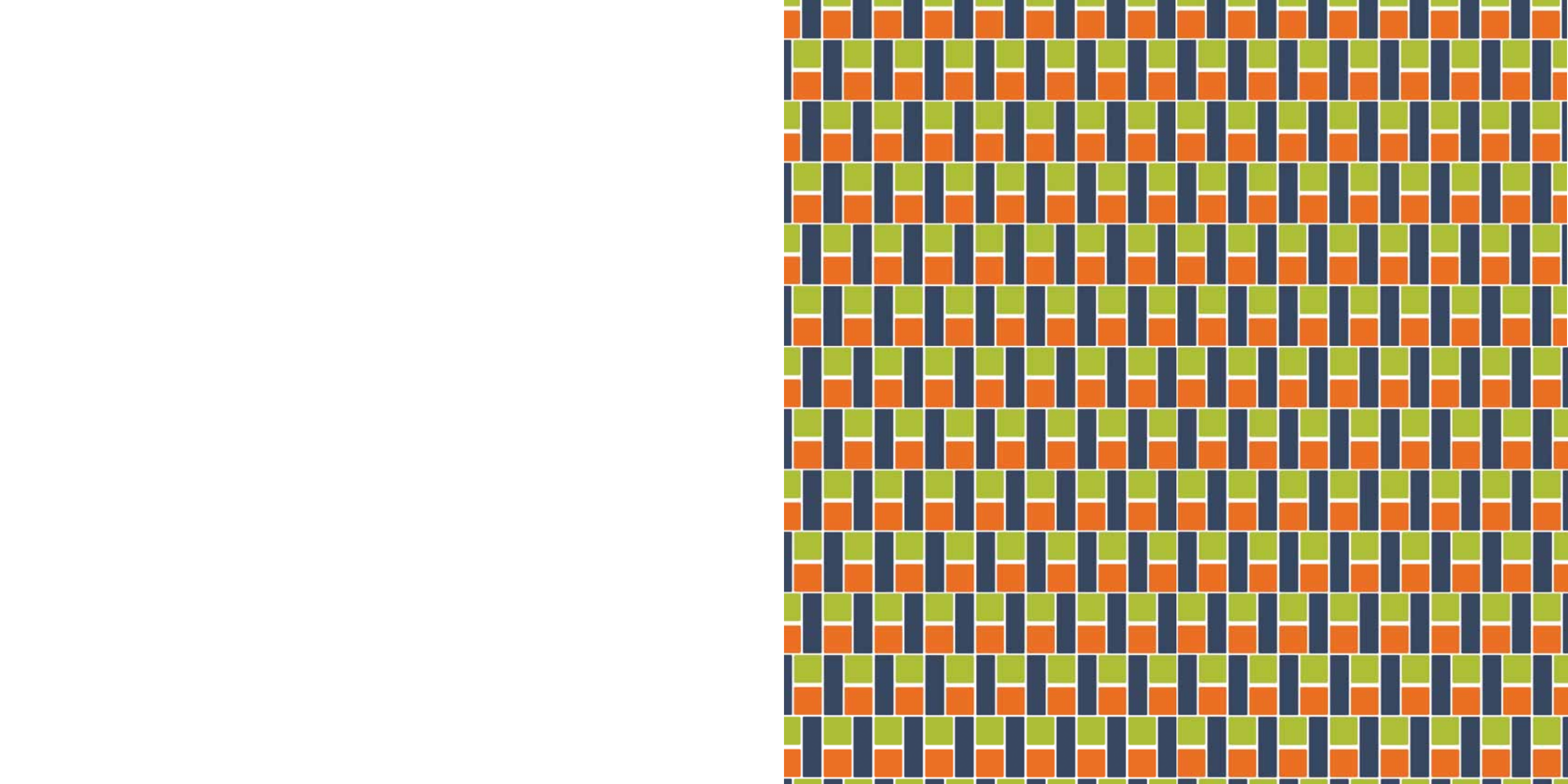
Location: Washington, DC
Year of Install: 2009
Team: BUJA
Design Firm: IA Interior Architects
Manufacturers: Kimball Office | Unifor | Vitra

IA Interior Architects is made up of architects, designers and workplace strategists who create high-performance, sustainable and visually compelling environments; naturally, they were a discerning client. IA Interior Architects, Kimball Office and WorkSpaces worked closely with one another to create a space that satisfied their extensive list of desires and requirements. An open benching concept was utilized to impart a clean and simple aesthetic, while promoting a collaborative environment through custom-tailored and reconfigurable elements.





We're proud of
what we've built at
WorkSpaces. You'll
be proud of what
we build for you.



www.WorkSpacesLLC.com